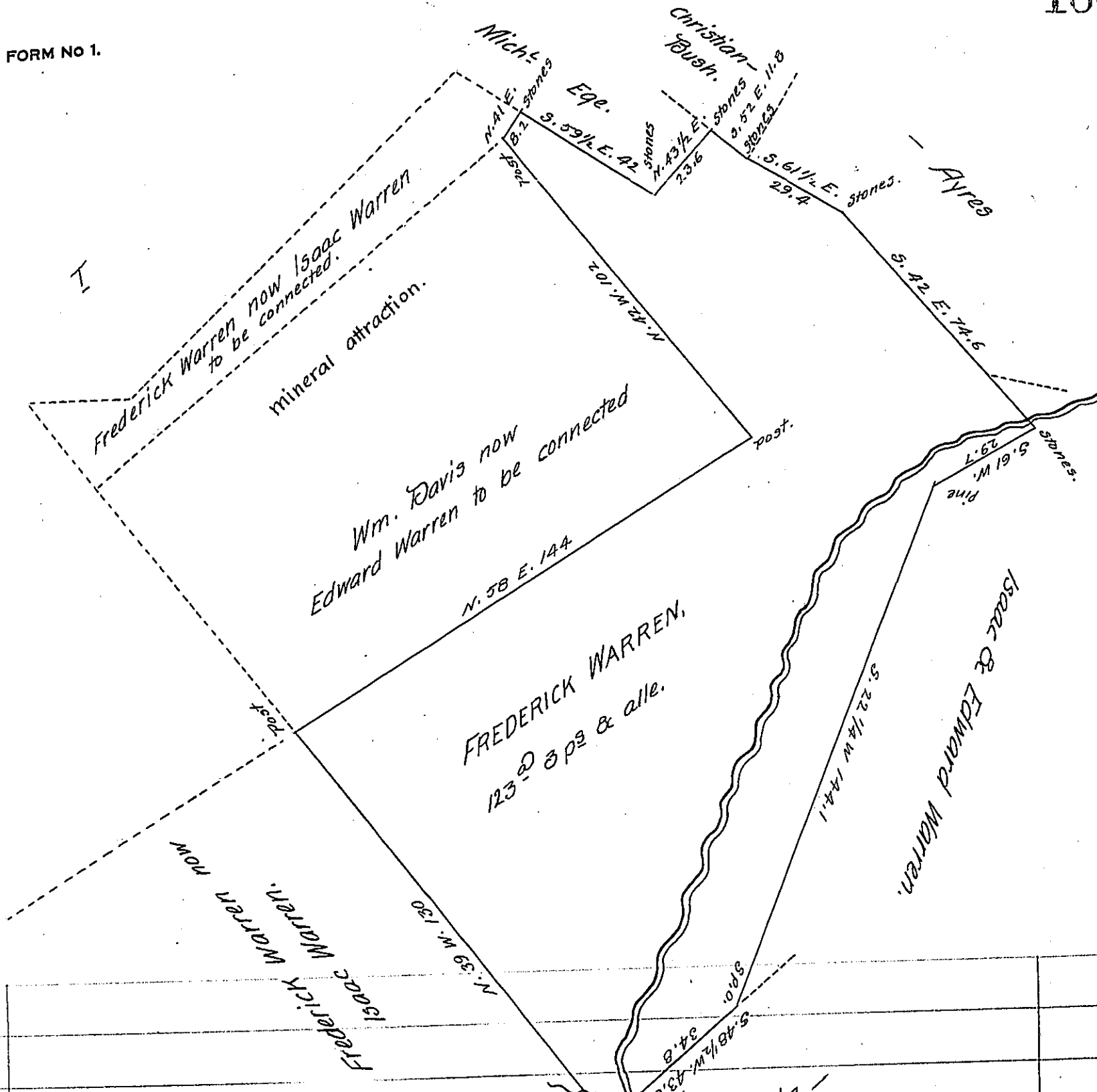


FORM NO 1.



Situate in  
Manallen Township

Adams County being part of a tract said to contain  
431<sup>2</sup> 37 p<sup>s</sup> & alle. but now found to contain 497<sup>2</sup> 73 p<sup>s</sup> & alle. Surveyed Aug<sup>r</sup> 28<sup>th</sup>  
1794 by Moses M<sup>r</sup> Clean D. S. by warrant to Fred<sup>k</sup> Warren dated May 7<sup>th</sup> 1794 -  
divided from the residue Dec<sup>r</sup> 7<sup>th</sup> 1820 for Edward Warren containing one  
hundred & twenty three acres three perches & allce.  
By Sam<sup>l</sup> Sloan, D. S.

To Jacob Spangler, Esq.  
Surveyor General.

IN TESTIMONY that the above is a copy of the original remaining on file in  
the Department of Internal Affairs of Pennsylvania, made  
conformably to an Act of Assembly approved the 16th day of  
February, 1833, I have hereunto set my Hand and caused  
the Seal of said Department to be affixed at Harrisburg,  
this fourth day of June 1907.

*Henry Houck*  
Secretary of Internal Affairs.